



The Village Crier

Your Local Community Newspaper

September 19, 2023

VOLUME 4, NO. 14

HOPI

CALENDAR

Nasanmuyaw

(September)

The Feasting Moon

Sep	Nasanmuyaw
Oct	Angakmuyaw
Nov	TömöKyelmuyaw
Dec	Kyaamuyaw
Jan	Tömö'Paamuyaw
Feb	Powamuyaw
Mar	Ösömuayaw
Apr	Kwiyamuyaw
May	Hakitonmuyaw
Jun	Woko'uyis
July	Tala'Kyelmuyaw
Aug	Tala'Paamuyaw

This Month in Hopi History

• 1519AD: Hernando Cortes conquered Aztec Empire

• 1906: Split at Orayvi

• 1962-1963 Court Opinion with appeals: District 6 ruled to be exclusively Hopi; but parts of the Hopi Reservation established in 1882 became a Joint Use Area (about 500,000 acres of Hopi land lost)

First Mesa Consolidated Villages

P.O. Box 260
Polacca, AZ 86042
928-737-2670

The Village Crier is published on the 1st and 3rd Tuesday of the month. To subscribe, submit news articles or advertise in the paper, contact Louella Furcap at 928-737-2670 or by email Lnahsonhoya@gmail.com

After Years of Non-use, Foot Trails are in Need of Repair



Due to years of non-use and neglect, Foot trails leading down the Mesa have become dilapidated and are in much need of repair

By: Ivan Sidney, Village Administrator
First Mesa Consolidated Villages

The Paqölv kiva at First Mesa has been planning to make repairs on the middle village trail leading from the mesa to the Lower Polacca spring, the Tawapa.

This is in preparation for the upcoming winter ceremonies when these mesa trails are used for our annual ceremonial purposes.

The shifting of the mesa and threats of loose boulders above

the mesa road could lead to the use of the foot trails. This should result in the entire community joining in the repairs to the trail before the winter months.

The Kiva group held several planning meetings and also recently presented their work plan to the Sichomovi Village Board of Directors. This resulted in the Board taking the position that the trail repairs are the responsibility of the Kiva members.

In response, a letter was written to the village board to disregard the request for assistance and that the Kiva will take on the responsibility.

On Sunday, September 10, Randall Ami, Oscar Lalo, Fredrick Ami, and Ivan Sidney walked the trail for an inspection to determine what repairs, tools and material are needed

for the work project.

The work date has been tentatively set for October 7 & 8, 2023. The Kiva members will also reach out to special interest groups and especially the U. S. National Park Service for proper design of foot trails.

As the planning and preparations are in the works, a public announcement will be issued to call for any volunteers.

The OneLegacy Donate Life Rose Parade Float, Announces Its 2024 Float Theme, *Woven Together: The Dance Of Life*

Los Angeles Bus Wire

OneLegacy announced today the theme of the 2024 OneLegacy Donate Life float: *Woven Together: The Dance of Life*. Building on their 20 years of floats and their 2023 Tournament of Roses Sweepstakes Award, the highest Tournament of Roses honor, OneLegacy will again be a part of the Rose Parade® on New Year's Day of 2024 in Pasadena, California.

Pasadena Tournament of Roses Association President Alex Aghajanian selected the 2024 Rose Parade® theme, **A World of Music**. In a world of different cultures, beliefs, hopes, and dreams, one language unites all - music. In the same way that music connects all, organ, eye, and

tissue donation brings a world of people together, thanks to the gift of life. The OneLegacy Donate Life float illustrates this theme by sharing a rich cultural heritage, craft, and music.

The *Woven Together: The Dance of Life* float showcases the culture of the Hopi, native to the American Southwest. This group of Pueblo Native Americans is one of the oldest cultures in the United States, originating approximately 7,000 years ago. The Hopi have always been outstanding weavers and artisans, and their dances include colorful costumes and impressive headdresses.

The 2024 OneLegacy Donate Life float features a beautiful Butterfly Dancer wearing an impressive and intricate

headdress. The Hopi Butterfly Dance is a two-day, ceremonial, social dance for young people in northern Arizona's Hopi villages during late summer and early fall to celebrate the corn harvest. The maidens dress in elaborate headdresses called tablitas, which have symbols of corn, butterflies, and prayers. The dance pays homage to the butterflies that pollinate the corn, helping the crop prosper. Surrounding the dancer are traditionally woven baskets full of life-giving corn and other fruits from Hopi culture.

Memorial floragraphs honoring life-giving organ, eye, and tissue donors will be displayed on the baskets; transplant



recipients will ride on the float, and living donors will walk alongside it. This beautiful Native American scene is completed with prickly pear plants, stalks of corn, and fluttering butterflies. To many Native Americans, dance is a form of inspiring storytelling that honors their culture and departed ancestors, making the float's celebration of the Hopi Butterfly Dance both beautiful and meaningful.

Additionally, the but-

terfly has a remarkable tie to organ donation and transplantation. The butterfly has long been a symbol of rebirth, from caterpillar to chrysalis to butterfly, and has come to symbolize the power of donation and transplantation.

In this way, the 2024 OneLegacy Donate Life Float follows the annual tradition of beautifully depicting people and cultures while sharing the human connection of caring for one another that brings together.

FIRST MESA
CONSOLIDATED
VILLAGES

PO BOX 260
POLACCA, AZ
86042

TRADITIONAL
LEADERS

Kikmongwi
James Tewayguna

Kikmongwi Spokesmen
Dickson Silas
Albert T. Siquah, Sr.
Albert Silas

Katsin Mongwi
Sam Tenakhongva

Soyal Mongwi
- - -
Soyal Mongwi Spokesman
Frederick Ami

FMCV STAFF:

Ivan Sidney
Village Administrator

Wilber Kaye
Staff Assistant

Brannon Sidney
Accountant

Meredith Qotswisiwma
Water Clerk

Sharon Grover
Water Clerk

Alfonso Sakeva, Jr.
Water Operations Superv.

Joshua Huma
Water Operator

Craig Grover
Maintenance

Daylan Qotswisiwma
Water Operator

Myron Ami
Consultant

TRIBAL COUNCIL
REPRESENTATIVES

Albert Siquah
Dale Siquah
Wallace Youvella, Jr.

PUBLICATION

The Village Crier is published on the 2nd and 4th Monday of the month. Articles, announcements, etc. are due Thursday before publication.

For information call:
FMCV at 928-737-2670
or email:
Lnahsonhoya@gmail.com

HTI-FTHP—Hopi Telecommunications Fiber to the
Premise (FTTP) Project set to start

September 8, 2023
For Immediate Release

KEAMS CANYON, AZ is where Hylan West, Inc., will begin the construction Fiber to the Premise Project across the Hopi Reservation ending in Hotevilla. The Project will begin September 18, 2023. This is a 14-month project that has fiber connecting to homes, schools, and other locations. Construction will be in progress Monday through Friday with work hours set for 7:00 A.M. – 6:00 P.M. (MST). No work will be done during weekends, holidays nor during inclement weather.

Carroll Onsae, HTI General Manager, states this project was awarded to Hylan West, Inc. the project consists of approximately

37.91 miles of aerial and buried construction throughout the communities from Keams Canyon to Hotevilla. Vehicle traffic from the contractor’s work trucks and construction equipment can be expected along HTI’s existing copper line routes along highways and easements.

The second; Onsae says is awarded to Diversified Solutions, Inc., to install fiber optic service drops to approximately 651 residential/business locations across Hopi. Construction will install a new fiber service drop (aerial or buried) from a fiber pedestal or pole to a new network interface device on the side of the premise.

Construction will commence in mid-October 2023.

The full project is expected to be completed in December 2024. Hopi Telecommunications, Inc. is happy to get the project started knowing the Hopi People have been patiently waiting for the availability of fiber optic connections. Hopi is a unique area and HTI wants to make sure all construction guidelines and protocols with local Villages and Communities are obtained for proper guidance and/or consent in compliance with tribal ordinances and village traditional practices for a successful outcome. ###

Calendar of Events and Happenings

Sept. 21, 2023 Doors open 5:30pm Humor Healing with James Junes at Moenkopi Legacy Inn	Hopi Marriage Presentation Moenkopi Legacy Inn	Hopi Behavioral Health Confer. Moenkopi Legacy Inn & Suites For info call: 928-737-6300
September 22, 2023 Indian Day Festivities Hopi Jr. Sr. High School	Sept. 27/ Oct. 25/ Nov. 29, 5:30p Virtual ZOOM Presentation: Employment & Education Meeting ID: 281 908 6907 Passcode: 240916 For questions call: 928-734-3547	October 7, 2023 16th Annual Taawaki Trail Run Registration: Aug. 7—Sept. 8 For info call: 928-734-3432
Sept. 22-23 9am-5pm 2nd Annual Hopi Community Health and Wellness Fair Tewa Community Bldg, Polacca For info call: 928-737-9556	September 29, 2023 Indian Day Festivities First Mesa Elementary School	October 15, 2023 Climb the Mesa to Conquer Cancer 10K Run & Walk For info call: 928-734-1150
Sept. 26, 2023 11am—6:30pm Nat’l Recovery & Suicide Prevention Peace Academic Ctr, Kykotsmovi Call 928-737-6311/6318 for Info.	September 29 & 30, 2023 Standin’ on the Corner Festival Winslow, AZ	October 19—22, 2023 Western Navajo Nation Fair & Parade Tuba City, AZ
September 26, 2023, 6pm—8pm Hopi Marriage Presentation Veterans Center, Kykotsmovi,AZ	Sept. 30 & Oct. 1, 2023 5am—6pm Sumi’Nangwa Hopi Festival Hopi Veteran’s Memorial Center Kykotsmovi, AZ	October 21 & 22, 2023 Tuuvi Gathering Moenkopi, AZ For information call 928-283-4500
September 27, 2023, 6pm—8pm	October 4, 2023, 8am—5pm	

First Mesa Consolidated Villages Tribal Council Representatives REPORT Card

FMCV Tribal Council Representatives are required to make Monthly Reports and Updates to the First Mesa Community. However, due to past gathering restrictions, no public meetings have been held ad Reports are published in the Village Crier. Below is a recap of reports submitted by your Council Representatives, beginning January 1, 2022 to Present.

2023 Reports Received	Ivan Sidney Admin	Albert Siquah	Dale Siquah	Wallace Youvella Jr	2022 Reports Received	Ivan Sidney Admin	Albert Siquah	Dale Siquah	Wallace Youvella Jr
January	✓/✓	●	✓/✓	✓	January	✓/✓	✓	✓	✓
February	✓✓✓ ✓✓✓	●	●	✓	February	✓/✓/✓	✓/✓	✓	✓
March	✓/✓	●	✓	✓	March	✓/✓/✓	✓/✓	✓	✓
April	✓	✓	✓	✓	April	✓/✓/✓	●	✓	✓
May	✓/✓	✓	✓	✓	May	✓/✓	●	✓✓✓	✓
June	✓/✓	●	✓	✓	June	✓✓✓✓	●	✓	✓
July	✓/✓	✓	✓	✓	July	✓✓✓✓ ✓✓✓	●	✓	✓
August	✓/✓	●	✓	✓	August	✓/✓	✓	✓	✓
September	✓/✓	●	✓	✓	September	✓/✓	●	●	✓
October					October	✓✓✓✓	✓	●	✓
November					November	✓✓✓✓	●	✓	✓
December					December	✓✓✓✓	●	●	✓

Free
Firewood
Collection
Opens Near
Flagstaff

In a recent news article, “Free firewood is now available on a new area of the Coconino National Forest’s Flagstaff Ranger District for valid permit holders. The free use area is located roughly 1.5 miles down Little Elden Springs Road (Forest Road 556).

Collection areas are clearly marked. Free use permits are needed to collect wood and can be obtained by calling or visiting the Coconino National Forest’s Flagstaff Ranger Station located at 5057 N. Highway 89 during business hours. The Flagstaff Ranger Station is open 8 a.m. to 4 p.m. Monday through Friday excluding federal holidays.

Due to limited staffing, permit seekers are advised to call the Flagstaff Ranger Station at 928-526-0866 before arrival to ensure permits can be processed that day. Permits are currently unavailable at the supervisor’s office.

Only dead and down wood may be collected in the free use area, which includes slash piles from a recent timber sale contract.”

Little Elden Springs Road is accessible by most vehicles, and high clearance vehicles are not required.

Information provided
by Coconino National
Forest

The journey
of a
thousand
miles begins
with one
step.

The best
preparation for
tomorrow is doing
your best today.

First Mesa Community Emergency Response Plan

The Community is asked to review the Plan and make any recommendations and/or changes to the Plan before it is finalized. Recommendations can be sent to: infofmcv@gmail.com

LOCAL EMERGENCY RESPONDERS

Hopi Police Emergencies dial: 911
Cell Phone: (928) 497-1493
(928) 734-7340
(928) 734-7341

Emergency Medical Services/Rescue: 911
(928) 734-7340

Structural Fires: 911
(928) 734-3662

Wildland Fires: 911
(928) 734-XXXX

Arizona Public Service (APS)
Downed Power Lines – 911 or (800) 253-9405
Outages – (800) 688-2437

Hopi Telecommunications Incorporated (HTI)
(928) 738-HOPI (4674)

Please obtain an emergency contact number from your propane/butane provider. Remember dialing 911 from a cellphone may connect you with the nearest cellular tower and may transfer you to surrounding area 911 call centers instead of Hopi Police

PLAN MAINTENANCE

Plan Maintenance and Update

The First Mesa Emergency Management Team is responsible for maintenance and update of the plan. The plan will be updated annually and in response to lessons learned from exercises or actual disasters.

Plan Distribution

Printed copies of the initial plan and any future updates will be distributed to the community for which this plan was developed. The plan will also be posted on www.firstmesaconsolidatedvillages.com and other village websites/blogs.

Plan Modification Register

Changes made to the Plan are reflected below:

Description of Changes	Page Number	Date of Changes	Authorized Signature
Adoption of ERP	All	July 2023	



ACKNOWLEDGEMENTS

The plan was developed by members of the First Mesa Consolidated Villages:

- 1. First Mesa Emergency Management (FMEM)
- 2. First Mesa Community members

The following people participated in development of the plan:

The plan was completed on:

Month and Year

Ivan Sidney, Emergency Management Leader

Concurred by: James Tewayguna, KikMongwi

Concurred by: Darren Poleyestewa, Soyal Mongwi

NAME	ORGANIZATION
Ivan Sidney, Sr, Village Administrator, FMEM	First Mesa Consolidated Villages (FMCV)
Myron Ami, Research & Planning, FMEM	FMCV
Wilber Kaye, Research & Planning, FMEM	FMCV
Brannon Sidney, Logistics & Finance, FMEM	FMCV
Louella Furcap, Public Information, FMEM	FMCV

INTRODUCTION

Background

We recognize that preparing for disasters and catastrophic events is necessary for the community to respond and recover in an efficient manner. Disasters are not a matter of “if”, but “when”. The First Mesa Community is located in Northeastern Arizona on the Colorado Plateau within the Hopi Reservation, Navajo County, Arizona. The villages of First Mesa include Walpi, Sichomovi and Tewa. The elevation is about 6,200 feet. These are the traditional villages of First Mesa. The community of Polacca is located in the valley below the villages (North and South). The elevation is about 5,800 feet. The community houses the overflow from the traditional villages. These are collectively known as the First Mesa Consolidated Villages. The Population is approximately 1,493 per 2020 US Census Bureau statistics.

First Mesa is the largest community on the Hopi reservation and does not have a Tribal Police Department or Tribal Fire/Rescues services. Police and Fire must respond from the Village of Kykotsmovi, 20 miles west over the Colorado Plateau mesa of Second Mesa. Due to the geologic elevation climb and decline over Second Mesa, it takes approximately 30 minutes for response. The Bureau of Indian Affairs (BIA) maintains a volunteer Fire Department in Keams Canyon but may not be able to respond to all structural fires or rescue due to BIA Policy.

The Hopi Health Care Center (HHCC) is located within the jurisdiction of First Mesa and has Emergency Response and Rescue. It is located approximately 3 miles from the center of the community. Response may be delayed due to an insufficient street naming system and lack of a master plan for the community.

The Navajo County Sheriff’s Office (NCSO) is located in Holbrook, AZ, approximately 80 miles from First Mesa. The Arizona Department of Public Safety (AZDPS) has one Patrol vehicle for State Routes 87 and 264.

Currently, there is no listing for Community Emergency Response Team (CERT) members for First Mesa. The Hopi Tribe Department of Public Safety & Emergency Services (DPS&ES), Hopi Emergency Response Team (HERT) manages the CERT Program. HDPS&EM is responsible for updating and maintaining:

- The Hopi Emergency Response Plan
- The Hopi Hazard Mitigation Plan.

Purpose

The Primary Purpose of the plan is to outline strategies that our community members can take to support themselves, in the event of a disaster. This plan is scalable to cover large scale disasters or small scale events.

The plan is based on the recognition that the priorities in a disaster are self, family and community. It’s built on the concept of neighbor helping neighbor until professional help arrives. The plan will provide a mechanism for our community resources as they respond to assist the community.

This plan is not meant to replace the overall Hopi Tribal Emergency Response Plan. This community plan will help to support tribal resources as they respond to assist the community.

How the Plan was Developed

The plan was developed as a collective strategy to respond to emergencies in a consistent manner and to serve the First Mesa Community directly. This plan follows in the Federal Emergency Management Agency (FEMA) Emergency Response Guide and the FEMA Developing and Maintaining Emergency Operations Plans. The plan was conceived through a series of public community meetings that addressed threats and risks to the community. The need for a plan derived from recent consecutive annual weather events.

About Our Community

First Mesa Consolidated Villages is defined in the Constitution and By-laws of the Hopi Tribe, is part of a “union of self-governing villages sharing common interests and working for the common welfare of all.” (Hopi Tribe, 1936) The First Mesa Self-Governed Traditional Leadership consists of a Kikmongwi, Soyal Mongwi, Kachin Mongwi, their Spokesmen and the Clan Leaders. There are also four (4) Hopi Tribal Council Representatives from First Mesa as written in the Constitution and By-Laws of the Hopi Tribe. In 1998, the Hopi Tribal Council created three (3) community service offices to administer day to day services such as welfare assistance, senior and youth programs. They are funded annually to provide community services for their respective enrolled members. They are not self-governing villages but fall under the traditional self-government of the Traditional Leadership. They are not listed in the Hopi Tribal Government Organizational Chart.

The First Mesa religious and traditional leadership consented to the Hopi Constitution, with the agreement that First Mesa will remain under the traditional form of government as one consolidated village – with one Leader - the Kikmongwi who is head of the Village.

Today, the First Mesa Consolidated Villages remains under the traditional form of governance with an administration office that assumes the responsibility of progressive needs for the people, i.e., Utilities- electricity, water/sewer, Communications- internet, telephone, and infrastructure, to name a few.

The governmental structure is a unique system, but required, to keep the Hopi people intact with the Hopi Religion and Hopi traditional ways of life. The Hopi people have sustained their complex lifeways for thousands of years and have merged traditionalism with modernism to successfully provide for their families.

First Mesa includes within its jurisdiction the community of Pongsikya (Keams Canyon), 10 miles east, but is not included in this plan. Future plans will include Pongsikya (Keams Canyon).

The Hopi Tribe Land Information Systems is currently in the process of naming streets and routes in compliance with state and federal residential addressing requirements.

Plan Organization - This plan is organized into three parts:

- 1. A **basic plan**, which identifies threats and risks to the community, community assets, and a community disaster response strategy. The basic plan applies to all hazards.
- 2. **Functional Annexes** that detail how some tasks, such as communications, or search area rescue will be performed.
- 3. **Hazard Specific Annexes** that describe responses to specific hazards such as floods or wildfire events.

Basic Plan First Mesa Community

The community of Polacca stretches along Arizona State Route 264. Polacca is the only Hopi Community where the state highway travels directly through¹. There are two (2) washes in Polacca that run perpendicular across the highway; the Polacca Wash and Wepo Wash². Both are bridged washes and are under the jurisdiction of the Arizona Department of Transportation (ADOT).

There are paved and unimproved roads and routes throughout the community. Some of these roads and routes are maintained by the Hopi Department of Transportation (HDOT). Some roads and routes within the community are not on the HDOT Route Inventory so they are not subject to improvement or maintenance, even in the event of a natural disaster.

There are approximately 300 scattered homes in Polacca, 4 housing subdivisions (Walpi Housing, FMES Housing, Tewa Sand Clan Housing and HJSHS Housing) and approximately 125 traditional and modern homes in the First Mesa Villages of Walpi, Sichomovi and Tewa. There are approximately 75 scattered homes in Pongsikya (Keams Canyon) 1 subdivision, Bureau of Indian Affairs Housing and a mobile home park.

There is an airstrip located near the Hopi Health Care Center (HHCC), and two helicopter landing pads (one at the HHCC ER and the other at the Law Enforcement/Judicial Complex.)

Several locations have been identified as potential Incident Command Posts, Staging and Mobilization. Hopi Health Care Center, First Mesa Consolidated Villages, Village of Walpi, Village of Sichomovi and Village of Tewa (See Maps, P12)

¹State Route 264 is a state highway in northeastern Arizona, that runs from Junction US 160 near Tuba City to the New Mexico State line at Window Rock, AZ. ²Polacca Wash and Wepo Wash are major tributaries from Black Mesa into the Little Colorado River.

Individual and Family Disaster Response Actions

Families are encouraged to develop their own 72 hour preparedness kit and go bags in the event of an emergency. The following items are suggested:

- Water (one gallon per person per day for several days, for drinking and sanitation)
- Food (at least a several-day supply of non-perishable food)
- Battery-powered or hand crank radio and a NOAA Weather Radio with tone alert
- Flashlight
- First aid kit
- Extra batteries
- Whistle (to signal for help)
- Dust mask (to help filter contaminated air)
- Plastic sheeting and duct tape (to shelter in place)
- Moist towelettes, garbage bags and plastic ties (for personal sanitation)
- Wrench or pliers (to turn off utilities)
- Can opener or multi-tool
- Local maps
- Cell phone with chargers and a backup battery

During an emergency there may be additional hazards that hinder your escape route. Consider the following while planning your escape route:

1. Check for unsafe conditions, such as downed power lines and gas leaks.
2. Know the procedure for shutting off gas valves that are not automatically shut off.
3. Tuning the radio to emergency frequencies to obtain information or instructions. (88.1 KUYI or NOAA)
4. Proper attire for seasonal and weather conditions
5. Do not attempt to cross flashfloods or walk in severe weather.
6. In the case of wildland fires, analyze your surroundings and choose the best route for evacuation.

Community Response

Once an incident has been identified and the community responders have gathered at the designated Incident Command Post (ICP), the first task is to get organized. A leader will be selected to direct the overall effort. An Incident Action Plan (IAP) will be developed to help the community decide what to do, how to do it, and what timeframe to do it in. Finally, the community should organize into teams, with a Team Leader for each team. Each team should have 3 to 7 people and a Team Leader. The Teams provide accountability and specific functions.

The First Mesa Consolidated Villages have identified the need to assist one another with technical assistance, manpower and resources. Once an emergency or incident occurs, a request can be made to another Community Service Office within First Mesa to assist.

Planning Process - Scope of the Plan:

The Scope of the Plan will include all populated and residential areas within the traditional clan lands of First Mesa Consolidated Villages.

The threats and risks that our community is most susceptible to are listed here in order of likelihood. Table 1

Threat	Likelihood of Occurrence	Level of impact
Rainstorm / Flooding	50% - 90%	High
Landslides/Rockfalls	50% - 90%	High
Winter Storm	10% - 50%	Moderate
Fire Wildland	10% - 50%	Moderate
Severe Wind	10% - 50%	Moderate
Fire Structural	3% - 10%	Low
Public Health	3% - 10%	Low

Purpose

The purpose is to identify the process in which First Mesa will plan for response. The planning process identifies five major components which includes:

- 1) Analyzing the Situation;
- 2) Establishing incident objectives strategy;
- 3) Developing a plan;
- 4) Disseminating the plan;
- 5) Executing the plan.

The Incident Commander (IC) will keep in mind that the plan will need to be evaluated and revised if needed. The community will utilize the planning process identified in the National Incident Management System (NIMS). The planning process represents a template for strategic, operational, and tactical planning that includes all steps that an Incident Command/Unified Command (IC/UC) and other members should take to develop and disseminate an IAP.

The planning process may begin with the:

- Scheduling of a planned event
- Identification of a credible threat
- Initial response to an actual or impending incident

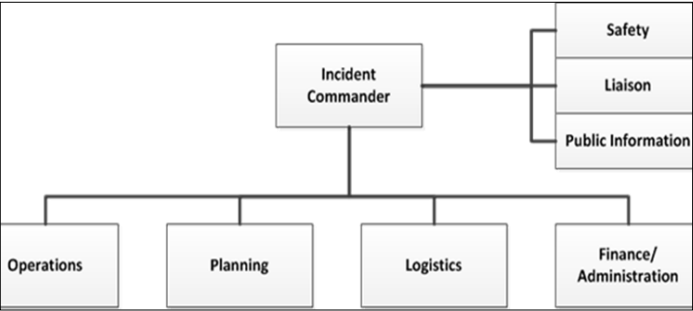
The process continues with the implementation of the formalized steps and the staffing required for the development of a written IAP.

Key Personnel

The Incident Commander will be selected as the person possessing the most experience and training with incident command events.

Community Leaders will assist in the selection of an Incident Commander and other critical staff positions within the Incident Command System (ICS). This is an example of a basic staffed ICS. Community response may not rise to this level but may be combined to achieve community goals.

Incident Command System. Figure 1.



Functions and roles may be assigned to multiple individuals, or a few persons may be assigned multiple responsibilities. Not all of the ICS positions need to be active in each incident. The ICS structure is meant to expand and contract as the scope of the incident requires. For small-scale incidents, only the incident commander may be assigned. Command of an incident would likely transfer to the senior on-scene officer of the responding agency when emergency services arrive on the scene. Command transfers back to the Community when the Lead Agency departs.

Incident Command System Core Concepts

- **Common Terminology**—use of similar terms and definitions for resource descriptions, organizational functions, and incident facilities across disciplines. Plain English.
- **Integrated Communications**—ability to send and receive information within an organization, as well as externally to other disciplines.
- **Modular Organization**—response resources are organized according to their responsibilities. Assets within each functional unit may be expanded or contracted based on the requirements of the event.
- **Unified Command Structure**—multiple disciplines work through their designated managers to establish common objectives and strategies to prevent conflict or duplication of effort.
- **Manageable Span of Control**—response organization is structured so that each supervisory level oversees an appropriate number of assets (varies based on size and complexity of the event) so it can maintain effective supervision.
- **Consolidated Action Plans**—a single, formal documentation of incident goals, objectives, and strategies defined by unified incident command.
- **Comprehensive Resource Management**—systems in place to describe, maintain, identify, request, and track resources.
- **Pre-designated Incident Facilities**—assignment of locations where expected critical incident-related functions will occur.

Escalation and Transfer of Command

If an incident escalates, if there are multiple threats present, an incident condition cascades or if community resources are depleted, requests are made to the Hopi Tribe, Hopi Emergency Response Team (HERT) to evaluate and to assume command. Such requests may necessitate a Village Resolution or Declaration.

The Hopi Hazard Mitigation Plan delegates lead agencies to strategize and respond to incidents such as winter storms, landslides/rock falls and floods without being deployed by the HERT. Coordination between agencies will commence when an incident is declared, and the IC is in place.

The Hopi Department of Transportation (HDOT) is lead for many of the natural disaster incidents and will deploy upon receipt of reports indicating that HDOT route inventory is at risk or presents a hazard. HDOT will only service roads on their inventory list. The Community Service Offices will provide assistance to community residential roads considered by HDOT as private driveways. The Arizona Department of Transportation will deploy upon receipt of information or observation of public risk to State Route 264.

First Mesa Consolidated

PO Box 260

Polacca, AZ 86042

928-737-2670

firstmesaconsolidatedvillages.com

Table 5.1 Current Mitigation Strategy				
Hazard(s) Mitigated N=new E=existing	Description	Estimated Cost/ completion Date	Lead Agency	Potential Funding Sources
HIGH PRIORITY				
Severe Wind N	Research Building/Utility codes for the Hopi Tribe to determine they adequately protect our people and property	Ongoing	OCEPD	N/A
Severe Wind N	Continue to enforce Ordinance 55 that ensures buildings are constructed to a standard	Ongoing	OCEPD	N/A
Land-slides/ Rockfall E	Monitor the roads near first, second and third mesa areas identified as potentials of slope and mesa erosion	Ongoing	HDOT	N/A
Winter Storm E	Conduct outreach program to have residents develop a 72-hour emergency kit	Ongoing	DPSES, PHEP, Villages, DNR & DHHS	N/A
Winter Storm N	Coordinate and identify alternative routes for emergencies	2 years	HDOT	N/A
Flood E	Identify the floodplains of Hopi land holdings	Ongoing	DNR Planner	N/A
MEDIUM PRIORITY				
Flood E	Identify possible improvements to low-water crossings and culverts on Indian Reservation Road (IRR)	Ongoing	HDOT/ DNR Programs	N/A
LOW PRIORITY				
Drought E	Research and assess the need for a drought response plan.	Staff Time Ongoing	ORM/ Land Operations	N/A

Wildland Fires or Structural Fires require immediate notification to Police Dispatch and/or directly to the appropriate fire agency.

Maps

Potential Incident Command Post, Staging and Mobilization sites:

The Primary location for the ICP will be the First Mesa Consolidated Villages Community Building and Conference Room. The other sites may serve as mobilization points for equipment and personnel.

- Primary – (P)
- Alternate/Staging – (A/S)



Figure 2. Hopi Health Care Center. Access to emergency medical services, helipad and airstrip. (A/S)

Figure 3. First Mesa Consolidated Villages (P), Village of Walpi (A/S) and Village of Sichomovi (A/S).



Figure 4. Village of Tewa. (A/S)



Training Needs Table 3

Course Title	Organization	Training Needs
IS 100, 200 & 700	FEMA	Community Leadership
CPR – First Aid	Hopi EMS	Community Members/Security
Flooding Preparedness	FM Emergency Management	Community Members/Security
Landslide Preparedness	FM Emergency Management	Community Members/Security
Extreme Heat Safety	FM Emergency Management	Community Members/Security
Severe Snowstorm Preparedness	FM Emergency Management	Community Members/Security
Fire Safety	Hopi Structural Fire Department	Community Members/Security
Wildland Fire Safety	Hopi Wildland Fire Department	Community Members/Security
Active Shooter Awareness	Hopi Police	Community Volunteers/Security
CERT Training	Hopi Emergency Response Team	Community Volunteers
Animal Control	Hopi Animal Control	Community Members/Security
Infectious Disease	IHS Public Health	Community Members

Local Services and Businesses within First Mesa Consolidated Villages– Community Partners Table 4.

1. Hopi Health Care Center	20. Hopi Public Defender Ofc
2. Emergency Medical Serv.	21. DOJ Corrections Temporary Holding
3. Amerigas	22. DOJ Detention Center (in construction)
4. Hopi Housing Authority	23. Hopi Jr Sr High School
5. First Mesa Elem.School	24. Northland Pioneer College
6. First Mesa Head Start	25. Hopi Veterinary Office
7. Hopi Telecommunications	26. Arizona Public Service
8. Village of Walpi	27. AZ Dep of Transportation
9. United States Postal Service	28. Hopi Traders (C-store, Gas, Auto, Café, Shopping Ctr, Laundromat)
10. First Mesa Consolidated Villages	29. Keams Canyon Baptist Church
11. Village of Sichomovi	30. United States Postal Service
12. Polacca Baptist Church	31. Bureau of Indian Affairs (Superintendent, Facilities, fire Department)
13. HTHA Youth Center	32. Office of Real Estate
14. Polacca Circle M (Hopi Traders)	33. Hopi Transit
15. Village of Tewa	34. Keams Canyon Elementary School
16. Assembly of God Church	35. Keams Canyon Catholic Church
17. Church of Latter Day Saints	36. Hopi Credit Association
18. Hopi Tribal Courts	37. Hopi Telecommunications Inc. (Main Office)
19. Hopi Domestic Violence Program	

Key Asset Needs Table 5.

ITEM	RESPONSE NEED	AMOUNT
Prepared-ness Kits	Emergency Preparedness (Senior & at risk priority)	100
Radios	Incident Communication	20
Canopies	Community Outreach	10
Emergency Medical Kits	Emergency Preparedness (First Responders)	20
Blankets	Emergency Preparedness	bulk
Flashlights	Emergency Preparedness	bulk
Sandbags	Emergency Preparedness	bulk

Key Assets Table 5.

Listed Below are assets in our community that are first to identify, respond and recover from an event or disaster. Our community assets are:

Asset Type	Asset Description	Asset Contact Info.
Hopi Health Care Center	Health Care Provider – Emergency Responder	928-737-6000
FMCV Public Safety	Public Safety Officer – First Responder	928-737-2670
Community Service Office Walpi	Security – First Responder	928-737-9556
Community Service Office Sichomovi	Security – First Responder	928-737-0446
Community Service Office Tewa	Security – First Responder	928-737-2254
Hopi Dept. of Transportation	Lead Mitigation Agency HIR 508	928-734-3000
Community Responders	Assists First Responders	

Annex

Incident Briefing Form (ICS 201). The ICS 201 Incident Briefing Form is available for download at: [www.https://training.fema.gov/emiweb/is/icsresource/assets/ics%20forms/ics%20form%20201,%20incident%20briefing%20\(v3\).pdf](https://training.fema.gov/emiweb/is/icsresource/assets/ics%20forms/ics%20form%20201,%20incident%20briefing%20(v3).pdf)

Functional Annexes

Notification Annex

Purpose - The purpose of this annex is to outline methods that will be used to notify the community members of an emergency or disaster.

Notification Procedure

During an emergency, the Village Administrator will be the point of contact for any information that needs to be relayed to the community. The Village Administrator can delegate a liaison if needed to gather information for the planning process.

This will be the method for relaying information:

- A community emergency responder will start the notification process.
- They will relay summary facts about the event.
- Alternative phone numbers or methods of contact should be listed for the first point of contact.
- If there is no contact, leave a message then contact the next person.
- Remind the contact that they will be contacting the next person on the list.
- The last person on the notification list should contact the first person to ensure the list is complete and that the message was delivered.

Phone tree

The community phone tree will be distributed to community leaders and will be used only for emergency situations and testing purposes. Consider providing a list of phone numbers and social media contacts in this annex. Phone numbers should be updated regularly. Call-downs should also be exercised regularly

Village Administrator Contacts the following: Table 6		
Community Service Office Walpi	Community Service Office Sichomovi	Community Service Office Tewa
Community Service Administrator	Community Service Administrator	Community Service Administrator
Alan Chavez	Phyllis Wittsell	Clay Hamilton
W: 928-737-9556	W: 928-737-0446	W: 928-737-
C:		
Email:		
Community Members	Community Members	Community Members

Missing Person Annex

Purpose - The purpose of this annex is to provide general procedures that might be followed once it is determined that there is a need to perform a search and rescue mission within the community.

General Procedures

Search and Rescue are two separate operations. During the search phase, the team(s) systematically inspects an area for a missing person. In the rescue phase, the team aims to provide lifesaving procedures such as First Aid or CPR. The rescue phase involves highly trained professionals and should not be attempted by unqualified personnel.

The objectives of a missing person team may include:

1. Maintain rescuer safety.
2. Establish and maintain communication protocols.
3. Coordinate the greatest number of people in the shortest amount of time.
4. Be prepared to provide lifesaving measures as quickly as possible.

If the community has members trained in CERT, then CERT teams will be responsible for initiating search rescue procedures and assigning teams to specific areas.

Key organizational strategies include:

1. Designate rescuer safety and communication as a priority.
2. Be alert for hazards.
3. Wear safety equipment (hard hats, goggles, sturdy shoes).
4. Never enter an unstable area or structure.

Following a disaster or during an emergency, the CERT team or other designated leaders will assemble at the community gathering place and designate search and rescue teams. One or two disasters consider assigning a scribe to each search and rescue team to ensure that the proper forms are completed, and that important information is documented.

Simple steps for conducting search for a missing person.

1. Gather information from family members.
2. Conduct an initial search of the last known area the person was last seen and search the areas the person is known to have hangout.
3. Contact any additional friends or family.
4. Be systematic. Use a search pattern to ensure that all areas of a building are covered. For example, when searching in abandoned houses and moving from the right to left across a house.
5. Listen carefully. Stop frequently and listen for voices or tapping sounds.

Flood Annex

Purpose - The purpose of this annex is to provide general procedures that might be followed for floods; preparation and response and recovery.

General Procedures - The general procedure for Flooding:

1. Activation and Notification:
 - Activate the emergency response plan, including the flood annex once a flood emergency is declared.
 - Notify the community about the flood situation and the activation of the plan.
2. Assessment and Monitoring:
 - Assess the severity of the flooding, including water levels, potential areas of impact, and the threat to life and property.
 - Continuously monitor weather forecasts, river levels, and any other relevant data to anticipate developments and adjust response efforts.
3. Communication and Public Awareness:
 - Establish clear communication channels for sharing accurate and timely information with the public, media, and stakeholders.
 - Issue flood warnings, evacuation orders, and safety instructions through various communication methods, such as alerts, social media, and local media outlets.
4. Evacuation and Sheltering:
 - Implement evacuation plans for affected areas based on the severity of the flooding and potential risks.
 - Open and manage emergency shelters for displaced residents, providing necessary resources like food, water, and medical care.
5. Search and Rescue:
 - Mobilize search and rescue teams to locate and evacuate individuals who are stranded or in immediate danger due to flooding.
 - Coordinate with local emergency services and specialized teams for water-based rescues if necessary.
6. Infrastructure Protection:
 - Take measures to protect critical infrastructure, such as levees, dams, and bridges, from flood damage.
 - Deploy barriers, sandbags, and other flood protection measures to safeguard key facilities.

Continued from P5

- Flood Annex**—General procedures continued:
7. Health and Safety:
 - Monitor and address potential health and safety hazards associated with flooding, such as water contamination, disease outbreaks, and electrical hazards.
 - Provide guidance on personal protective equipment and hygiene practices for responders and affected individuals.
 8. Recovery and Relief:
 - Initiate recovery efforts once the floodwaters recede, focusing on damage assessment, debris removal, and restoration of basic services.
 - Coordinate with relevant agencies to provide relief assistance, including financial aid and support for rebuilding.
 9. Coordination and Collaboration:
 - Maintain constant communication and coordination among various agencies, organizations, and stakeholders involved in the response effort.
 - Establish a unified command structure to streamline decision-making and resource allocation.
 10. Post-Incident Evaluation:
 - Conduct a thorough review of the response actions taken during the flood emergency to identify strengths and areas for improvement.

Update the flood annex based on lessons learned to enhance future response capabilities.

Hazard Threat and Incident Annexes—Purpose

The purpose of this annex is to identify procedures that will be followed once it is determined that there is a need to prepare and plan for any incident that threatens the First Mesa communities. The concepts of *Ready, Set, Go* criteria are designed to help community members be prepared and ready to go at a moment’s notice.

The community will use the *Ready, Set, Go* program adopted by the Fifteen (15) State of Arizona Sheriffs Offices that educates residents about proactive measures to take before an emergency and actions to follow when communities are threatened.

The three steps encourage Arizonans to get **READY** by preparing now for what threatens their community, be **SET** by maintaining awareness of significant danger and **GO**, evacuate when the danger is current and life threatening. Information

can be found at www.ein.az.gov/ready-set-go

All Hazards Threats

General Procedures—The Community Service Offices (CSO’s) will coordinate response needs for the community with the First Mesa Emergency Management Coordinator and responding resources to help mitigate the emergency.

- READY**
- The CSO’s will prepare the community for any threat by:**
1. Following the Emergency Plan
 2. Identifying threats and hazards within the community.
 3. Incorporate mitigation measures to reduce threats within the community.
- The CSO’s will assist by:**
1. Identifying *at-risk* community members.
 2. Providing preparedness information should an emergency impact the community.
 3. Assist with community mitigation measures which may include, information meetings, community clean up and preparedness training.
- The community members will be prepared by:**
1. Being informed of any changes that may affect the community (weather, events, emergencies)
 2. Prepare a 72-hour kit, have personal belongings ready when necessary.
 3. Conduct mitigation measures to reduce a threat to their home or neighbors’ residents. Being able to support one another during an emergency is key to a quick recovery.

- SET**
- The First Mesa Emergency Management team will coordinate with HERT and responding resources to assist in evacuation efforts and notify community members.
- The community leaders will assist by identifying those members who have functional needs and would need additional help to evacuate. They will also identify areas of concern within the community.
- The community members will be prepared by having their items ready to depart from their homes in an orderly fashion.
- GO**
- The First Mesa Emergency Management Team will notify community members when the evacuation process has started.
- The community leaders will assist by ensuring that all mem-

bers with access functional needs are evacuated first and then followed by other residents.

The community members will be prepared by evacuating in a safe and orderly manner to the predesignated location.

Incident Annexes

Emergency incidents may happen at any time and any location. This adds to the complexity of evolving incidents.

References:

Hopi Tribe Hazard Mitigation Plan (2015) H-xxx-2015

Hopi Tribe Emergency Response Plan (2005) H-023-2006

Navajo County Multi-Jurisdictional Hazard Mitigation Plan (2017)

Coconino County Multi-Jurisdiction Hazard Mitigation Plan (2021)

AZ State Emergency Response and Recovery Plan (2018)

CFR 44 Subchapter D – Disaster Assistance, Part 201 (2022)

Federal Emergency Management Agency (FEMA) National Tribal Strategy (2022-2026)

FEMA Tribal Mitigation Planning Handbook (2019)

FEMA Developing and Maintaining Emergency Operation Plans (Comprehensive Preparedness Guide) (2010)

FEMA National Incident Management System (NIMS) 2017

FEMA National Mitigation Framework (NMF) (2016)

United States Army Corp of Engineers (USACE) Tribal Partnership Program; Section 203 (2011)

Robert T. Stafford Disaster Relief and Emergency Assistance Act (2002)

Sandy Recovery Improvement Act (2013)

www.ready.gov

<https://www.phe.gov/Preparedness/planning/mscc/handbook/chapter1/Pages/emergencymanagement.aspx>

https://www.fema.gov/sites/default/files/documents/fema_cpg-101-v3-developing-maintaining-eops.pdf

<https://training.fema.gov/nims/>

https://www.nfpa.org/assets/gallery/riskassessment/story_content/external_files/Firewise_Community_Risk_Assessment.pdf

https://community.fema.gov/PreparednessCommunity/s/welcome-to-cert?language=en_US

www.ein.az.gov/ready-set-go

Interior Department Awards \$1million for Wood, to Help Heat Indigenous Communities

The U.S. Department of the Interior announced today that eight projects involving more than 20 tribes and tribal organizations were awarded close to \$3.5 million in 2023 Indian Youth Service Corps grants.

Wood for Life, a program that helps heat Indigenous communities’ homes from firewood harvested in Southwest Colorado, Utah, New Mexico and Arizona, was awarded \$1 million. The grant will expand the Ancestral Lands Conservation Corps’ program to further engage youths from the Navajo Nation, **Hopi Tribe**, Pueblo of Acoma, Pueblo of Zuni and Pueblo of Isleta. The program will increase forestry, reforestation efforts and wildland fire mitigation. The U.S. Forest Service will supplement additional program coordination support.

A previous *Journal* article explained how Wood for Life increased firewood for the Navajo Nation from the San Juan National Forest.

A news release announced Monday that funds will help bring Indigenous youths the opportunities to engage in public service projects on tribal and federal lands. This will be accomplished through a combination of education, work experience, mentoring, basic life skills and training.

The program's goals also include stories and shared experiences for current and future generations, creating awareness of Indigenous culture and history, and conserving and protecting tribal and partner organizations' landscapes.

Secretary Deb Haaland established the first awards for the IYSC as a partner-based program planned to bring forth Indigenous youths with meaningful, tribel- led public service opportunities that support conser- vation and protection projects for natural and cultural resources. This is done through rehabilitation, con- struction and restoration of natural, cultural, historic, archaeological, recreational or scenic resources.

The awards announced today are planned to assist

with developing tribal capacity in climate resilience, conservation and natural resource management. It will help with financial resources that enable tribes and tribal organizations to recruit, invest in and train a new generation of skilled Indigenous workers.

The \$3.5 million will provide tasks for the grant- ees that may include habitat surveys, invasive species removal, recreational expansion, oral histories, inva- sive species removal, development of educational, informal or communication materials for the public, climate mitigation, watershed restoration, fire fuels reduction, research projects and trail restoration.

IYSC projects will encourage self-determination and economic development on Tribal lands and fed- eral lands where Tribes have ancestral connections. The projects will be drafted and directed collabora- tively with nation-to-nation consultation before the start of any project.

Other IYSC grants were awarded to Ahtna Cul- tural Heritage Youth Program in Alaska, Wabanaki Youth in Science Program in Maine, Traditional Farm Corps in New Mexico, **Hopi Youth Services Corps** in Arizona, 7Gen Service Corps in South Da- kota, Connecting System Impacted Native Youth to Careers in Natural Resources in New Mexico and Intergenerational Natural Resources Summer Youth Camp at Coronado National Forest in Arizona.

“Growing up in New Mexico, I helped my grand- father tend to our family’s cornfield. My experiences taught me invaluable lessons about how deep our connection to the Earth really is,” Haaland said. “I launched the Indian Youth Service Corps to help empower the next generation of Native leaders as they engage in the co-stewardship of public lands and the application of Indigenous knowledge. The Corps will help these young people strengthen their connection to the lands and waters that their ances- tors have cared for since time immemorial.”

UPDATE on First Mesa Water Pump Outage

**For Immediate Release
September 13,2023**

First Mesa, AZ —An electrical surge occurred at the First Mesa Water tank causing the water pres- sure tank, motor, and water pump to stop working. An electrician was called, and he found that an elec- trical surge caused the breaker to shut the power down.

Currently, a certified Electrician is working with the First Mesa Water Techs to get the parts re- placed and get the water pump running as soon as possible.

We regret any inconvenience this has caused. Water is available at the bull pen for Mesa resi- dents. For more information, you may call 928-737 -2670. ###

First Mesa Consolidated Villages Water Payment Schedule

September	Due Date: Oct. 10, 2023
October	Due Date: Nov. 10, 2023
November	Due Date: Dec. 10, 2023
December	Due Date: Jan. 10, 2024

\$10 Late Fee imposed after due date

We accept Master Card & VISA Card pay- ments via telephone or Money Order Pay- ments via US mail or in drop box located out- side the office.

Call 928-737-2670 for Information

Jr. Sr. High School 2023-2024 Fall Sports Schedule

2023 Hopi High School Football Schedule			
Date	Opponent	Location	Time
Fri. 8/11	Alchesay (Scrimmage)	Hopi	V-6:00 pm
Fri. 8/18	Greyhills*	Hopi (Alpha League Night)	V-7:00 pm
Wed. 8/23	Camp Verde	Hopi	JV-6:00 pm
Thu. 8/24	Scottsdale Prep (Skydome Kickoff Classic)	Flagstaff	V-4:00 pm
Thu. 8/31	Ganado	Ganado	JV-5:00 pm
Fri. 9/1	Ganado	Hopi	V-7:00 pm
Wed. 9/6	Flagstaff (Frosh/Soph)	Hopi	JV-6:00 pm
Fri. 9/8	Zuni	Zuni	V-6:00 pm
Thu. 9/14	Tuba City*	Hopi	JV-6:00 pm
Fri. 9/15	Tuba City*	Tuba City	V-6:00 pm
Wed. 9/20	Alchesay	Alchesay	JV-6:00 pm
Thu. 9/28	St. Johns	St. Johns	JV-6:00 pm
Fri. 9/29	Valley (Sanders)*	Hopi (Homecoming)	V-7:00 pm
Thu. 10/5	Holbrook*	Hopi	JV-6:00 pm
Fri. 10/6	Holbrook*	Holbrook	V-7:00 pm
Wed. 10/11	Round Valley (Frosh/Soph)	Round Valley	JV-6:00 pm
Fri. 10/13	Many Farms*	Many Farms	V-6:00 pm
Thu. 10/19	Tuba City	Tuba City	JV-6:00 pm
Fri. 10/20	Red Mesa*	Hopi (Senior & Pink Night)	V-7:00 pm
Fri. 10/27	Pinon*	Pinon	V-6:00 pm
Fri. 11/3	2A State Playoffs-1 st Round	High Seed	7:00 pm
Thu. 11/9	2A State Playoffs-Quarterfinals	High Seed	7:00 pm
Sat. 11/18	2A State Playoffs-Semifinals	TBD	TBD
Fri. 11/24	2A State Playoffs-Championship	TBD	TBD
* Designates a 2A Little Colorado Region Contest.			
Note: All Times Mountain Standard Time (No Daylight Savings)			

2023 Hopi High School Cross Country Schedule			
Date	Event	Location	Times
Tue. 8/29	Rick Baker Invite	Hopi	3:00 pm
Sat. 9/9	Canyon De Chelly Invite	Chinle (Chinle Swap-Meet)	9:00 am
Fri. 9/15	Woodbridge Classic	Irvine, CA (Great Park Irvine)	5:00 pm
Thu. 9/21	Cougar Invite	Show Low (Fools Hollow Lake)	3:00 pm
Fri. 9/29	Nike Desert Twilight	Mesa (Teka Sticks G.C.)	4:00 pm
Fri. 10/6	Dave Conanser Invite	Winslow (McHood Park)	11:00 am
Fri. 10/13	2A North Region Meet	Hopi	1:00 pm
Fri. 10/20	Holbrook Invite	Holbrook (Hidden Cove G.C.)	1:00 pm
Fri. 10/27	Sectional Meet	Holbrook (Hidden Cove G.C.)	1:00 pm
Sat. 11/4	Division IV State Meet	Phoenix (Cave Creek G.C.)	8:30 am

2023 Hopi High School Chess Schedule			
Date	Event	Location	Times
Fri. 8/25 – Sat. 8/26	Region 1 Team Tournament	Alchesay H.S.	1:00 pm
Fri. 9/15 – Sat. 9/16	Region 1 Team Tournament	BASIS Flagstaff Academy	4:00 pm
Fri. 9/29 – Sat. 9/30	Region 1 Team Tournament	Greyhills Academy H.S.	12:00 pm
Fri. 10/13 – Sat. 10/14	Region 1 Team Qualifier	Tuba City H.S.	12:00 pm
Fri. 10/27 – Sat. 10/28	Region 1 Individual Qualifier	Lee Williams H.S.	1:00 pm
Fri. 11/3 – Sat. 11/4	State Team Championship	TBD	4:00 pm
Fri. 11/17 – Sat. 11/18	State Individual Tournament	TBD	4:00 pm

2023 Hopi High School Volleyball Schedule			
Date	Opponent	Location	Times
Fri. 8/18	Holbrook Multi-Team Scrimmage (Holbrook, Hopi, Joe City, Mogollon, NPA, and Page)	Holbrook H.S.	V-1:00 pm
Thu. 8/24	Ganado	Hopi H.S.	JV-5:00 pm & V-6:00 pm
Mon. 8/28	Rock Point	Hopi H.S.	JV-5:00 pm & V-6:00 pm
Wed. 8/30	Red Mesa	Red Mesa H.S.	JV-4:00 pm & V-5:00 pm
Fri. 9/1	Window Rock Invite	Window Rock H.S.	TBD
Sat. 9/2	Window Rock Invite	Window Rock H.S.	TBD
Wed. 9/6	Tuba City	Hopi H.S.	JV-5:00 pm & V-6:00 pm
Fri. 9/8	Spartan Invite	Ash Fork H.S.	TBD
Sat. 9/9	Spartan Invite	Ash Fork H.S.	TBD
Tue. 9/12	Many Farms*	Many Farms H.S.	JV-4:00 pm & V-5:00 pm
Thu. 9/14	Alchesay	Hopi H.S.	JV-5:00 pm & V- 6:00 pm
Sat. 9/16	Valley (Sanders)*	Valley H.S.	JV-11:00 am & V-12:00 pm
Mon. 9/18	Pinon*	Hopi H.S.	JV-5:00 pm & V-6:00 pm
Wed. 9/20	Round Valley* (Varsity Doubleheader)	Hopi H.S.	V-4:00 pm & 6:00 pm JV-5:00 pm
Wed. 9/27	Greyhills*	Greyhills Academy H.S.	JV-4:00 pm & V-5:00 pm
Tue. 10/3	Many Farms*	Hopi H.S. (Pink Night)	JV-5:00 pm & V-6:00 pm
Sat. 10/7	Greyhills*	Hopi H.S.	JV-10:00 am & V-11:00 am
Tue. 10/10	Pinon*	Pinon H.S.	JV-4:00 pm & V-5:00 pm
Thu. 10/12	Valley (Sanders)*	Hopi H.S. (Senior Night)	JV-5:00 pm & V-6:00 pm
Fri. 10/13	Joseph City Invite	Joseph City H.S.	TBD
Sat. 10/14	Joseph City Invite	Joseph City H.S.	TBD
Mon. 10/16	St. Johns* (Varsity Doubleheader)	Hopi H.S.	V-4:00 pm & 6:00 pm JV-5:00 pm
Thu. 10/26	2A North Region Quarterfinals	High Seed	6:00 pm
Sat. 10/28	2A North Region Finals	Valley H.S.	TBD
Tue. 10/31	2A State Play-In Game	High Seed	6:00 pm
Sat. 11/4	2A State Playoffs (1st 2 Rounds)	Phoenix	TBD
Tue. 11/7	2A State Semifinals	Phoenix	TBD
Sat. 11/10	2A State Championship	Veterans' M.C.-Phoenix	TBD
* Denotes a 2A North Region Contest - Note: All Times Mountain Standard Time (No Daylight Savings)			

2023 Hopi Jr. High School Cross Country Schedule			
Date	Event	Location	Times
Tue. 8/29	Rick Baker Invite	Hopi	3:00 pm
Sat. 9/9	Canyon De Chelly Invite	Chinle (Chinle Swap-Meet)	7:00 am
Fri. 9/15	St. Michael's Night Flight	St. Michael's I.S.	5:30 pm
Sat. 9/23	Ganado MS Invite	Ganado	9:00 am
Tue. 9/26	Baker MS Invite	Kayenta	8:00 am
Sat. 10/7	Lake Powell Invite	Page	10:00 am
Fri. 10/13	Bud Davis Invite	Tuba City	1:00 pm
Sat. 10/21	NAAC Finals	Page	10:00 am
Sat. 10/28	Northern AZ MS Championships	Flagstaff	10:00 am
Sat. 11/4	AZ Youth XC Championships	Surprise	10:00 am
Note: All Times Mountain Standard Time (No Daylight Savings)			

2023 Hopi Jr. High School Football Schedule			
Date	Opponent	Location	Time
Wed. 8/30	Page M.S.	Hopi	JV-4:30 pm V-6:00 pm
Wed. 9/6	Pinon M.S.*	Hopi	V-4:00 pm
Sat. 9/9	Tuba City H.S.*	Tuba City	V-9:00 am JV-11:30 am
Wed. 9/13	Ganado M.S.*	Ganado	JV-3:30 pm V-5:00 pm
Wed. 9/20	Chinle J.H.S.*	Hopi	JV-4:30 pm V-6:00 pm
Wed. 9/27	Tseohosool M.S.*	Fort Defiance	JV-3:00 pm V-5:00 pm
Wed. 10/4	Sanders M.S.*	Hopi	V-5:00 pm
Thu. 10/12	NAAC Play-In Games	Higher Seed	V-5:00 pm
Tue. 10/17	NAAC Semifinals	Higher Seed	V-5:00 pm
Sat. 10/21	NAAC Championship	Page	V-5:00 pm
* Denotes a NAAC East Region Contest.			
Note: All Times Mountain Standard Time (No Daylight Savings)			

INDIAN DAY FESTIVITIES

September 22
Hopi Jr. Sr. High School

September 29
First Mesa Elementary Sch

HOPI HEALTH CARE CENTER



Hopi Health Care Center is currently undergoing renovation/construction. Safety is our primary concern, so we kindly ask for your understanding and cooperation with changes to locations of some patient services. Signs will be posted to help with directions, and all HHCC staff members can offer assistance to patients/visitors during this time. We thank you for your cooperation and understanding.



GO BRUINS



THE VILLAGE OF WALPI PRESENTS
2nd Annual Hopi Community
Health and Wellness Fair
 Tewa Community Building, Polacca Arizona

SEPTEMBER 22, 2023 • 9:00 AM - 5:00 PM

FOOD VENDORS **What to expect** **DOOR PRIZES**

Culture Wellness	Health Resources
<ul style="list-style-type: none"> Hands on Art Experience Presenters - Culture Wellness Dance Group Craft Booths 	<ul style="list-style-type: none"> AHCCCS Renewal Immunizations Child Dental Assessments Women's Health Hopi Cancer Center ...And much more!

INCENTIVES **FARMERS MARKET**

*Required documents for AHCCCS Renewal: 2 forms of I.D. & Immunization cards.

In partnership with BCBSAZ, Arizona Public Service & Hopi Telecommunications
 For more details you may contact (928) 737-9556 or e-mail: walpiadmin@hopitelecom.net



Schedule of Events

September 22 & 23, 2023 - 9pm
 Dragon Fly Lounge, Cliff Castle Casino
 Camp Verde, AZ

September 30, 2023 - 9pm
 Hopi Mission School Gym
 Kykotsmovi, AZ

Sumi'nungwa Hopi Festival
 September 30 & October 1, 2023
 Hopi Veteran's Memorial Center
 Kykotsmovi, Arizona
 5:00 AM - 6:00 PM - Saturday
 5:00 AM - 5:00 PM - Sunday

Arts & Crafts * Food Vendors
 Social Dances * 10K & 5K Races

Vendor Fee: \$25.00 Per vendor, For Day, 10 X 10 Space.
 Fee must be paid in full to secure a spot. No Exceptions!
 Peddlers Permit required.

* Craft vendors will be inside the gym. Space is limited.
 Must provide own table and chair.

* Food vendors will be outside at a designated area. Space is also limited. Electricity will not be provided. Generators are recommended.
 Must provide own table, chair & canopy if needed.
 Food Handlers Card is required.

Open to all dance groups.

Everyone Welcome!

For more info: (928) 737-0174 * (928) 497-1830 or (928) 206-7801
 For Lodging call: (928) 734 - 2401 * Make your room reservations NOW!
 Vendors & HVMC will not be responsible for any personal injuries or theft of property.

October 24-28, 2023
Indian National Finals Rodeo
Las Vegas, Nevada

Hopitutuqaiki presents:
Hopi Marriage

HOPI WEDDINGS ARE UNIQUE AND HAVE A SIGNIFICANT MEANING IN HOPI LIFE. THEY HAVE BEEN HELD FOR HUNDREDS OF YEARS AND HAVE EVOLVED. TODAY, THE PRACTICE STILL EXISTS. THIS INFORMAL PRESENTATION WILL BE FACILITATED BY INDIVIDUALS WHO OFFER THEIR INSIGHTS AND KNOWLEDGE FROM A HISTORICAL HOPI PERSPECTIVE. HOPI PEOPLE ARE ENCOURAGED AND INVITED TO ATTEND.

LOCATION:
 VETERAN'S CENTER KYKOTSMOVI, AZ
 TUESDAY SEPTEMBER 26, 2023
 TIME: 6PM TO 8PM

LOCATION:
 MOENKOPI LEGACY INN
 WEDNESDAY SEPTEMBER 27, 2023
 TIME: 6PM TO 8PM

SPACE MAY BE LIMITED DUE TO ESTABLISHED PROTOCOLS CONCERNING SAFETY, SO PLAN ON BEING ON TIME.
 THE EVENT IS ALCOHOL & DRUG-FREE - NO REGISTRATION IS REQUIRED.
 FOR MORE INFORMATION ABOUT THE EVENT
 928-401-6451 / 6494 • INFO@HOPITUTUQAIKI.COM • WWW.HOPITUTUQAIKI.COM

The Hopi Wildlife & Ecosystems Management Program

WOOD HARVEST
HART RANCH
ENROLLED HOPI TRIBAL MEMBERS ONLY

Saturday, September 23rd & Sunday, September 24th, 2023
Last vehicle in at 2:00 P.M. NO EXCEPTIONS!!!

DIRECTIONS:

From Flagstaff:
 From Flagstaff the Hart Ranch is approximately 20 miles east on I-40. Exit at the Twin Arrows Exit (Exit 219).

From Winslow:
 From Winslow the Hart Ranch is approximately 40 miles west on I-40. Exit at the Twin Arrows Exit (Exit 219).

Harvesting sites are located approximately 5.5 miles south of exit. WEMP staff will be stationed at the Main Entrance to check you in and direct you to the different sites.

ITEMS TO BRING:

Your Tribal Enrollment Card and/or ID.
 A spare tire, tools, chain saw, lunch and plenty of water.

**** NOTE ****

A Special Hopi Tribal Wood Hauling Permit will be issued to you at the main entrance before you leave the Hart Ranch.

HOPI HEALTH CARE CENTER
IMMUNIZATION CLINIC

SEPTEMBER 19, 2023
9:00 A.M. - 11:30 A.M.
1:00 P.M. - 3:00 P.M.
LOCATION: HHCC LOBBY

If you need information on your vaccine status, you may call the PHN department or your primary care provider.

Appointments preferred Walk-ins welcome
 Please call the PHN Department at:
 928-737-6257, 6263, 6330 or 6259

Hopi Higher Education and Workforce Development

EMPLOYMENT
EDUCATION

Hopi Tribe Grants and Scholarship Program
 Adult Vocational Training Program (AVTP)

Virtual Presentation

Workforce Innovation and Opportunity Act (WIOA)
 Hopi Vocational Rehabilitation Program (HVRP)

Wednesday, September 27, 2023
 5:30 PM

Wednesday, October 25, 2023
 5:30 PM

Wednesday, November 29, 2023
 5:30 PM

ZOOM
Meeting ID: 281 908 6907
Passcode: 240916
QUESTIONS: CALL (928) 734-3547

The Hopi Tribe WIOA is an equal opportunity employer program. Auxiliary aids and services are available upon request to individuals with disabilities. TTY/TTD: 711

Save The Date
Sunday, October 15th, 2023

Hopi Cancer Assistance Fund
CLIMB THE MESA
To Conquer Cancer

10k Run & Walk

More information to come soon. Please call us with any questions at (928) 734-1150.

Tuuvi Gathering
October 21 & 22, 2023
 Applications for Arts & Crafts, Food Vendors and Dance Groups can be picked up at the hotel front desk or contact us for emailed or faxed applications.

TUUVI GATHERING
Moenkopi, Arizona

SAT. & SUN. OCT 21ST & 22ND

ARTS & CRAFTS || JEWELRY, POTTERY, PAINTINGS, KACHINAS AND SO MUCH MORE!
 SOCIAL DANCING | FOOD VENDORS!!

For more information call 928-283-4500 or email tuuvigathering@experiencehopi.com or use the QR code to go to our website.

- THE ORIGINAL - TEXAS TWISTER DRINK
 Native American Owned

TUUVI TRAVEL CENTER

Visit Us Online at:
firstmesaconsolidatedvillages.com